

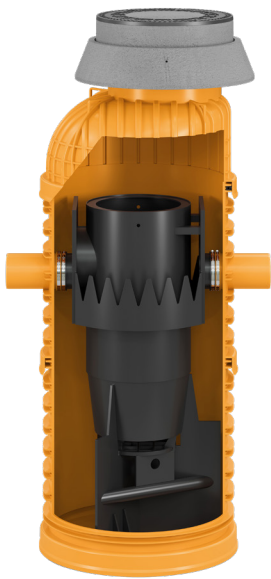


3P Technik Filtersysteme GmbH



# HYDROSHARK®

ADVANCED INTERNALS  
PROVEN SEPARATION

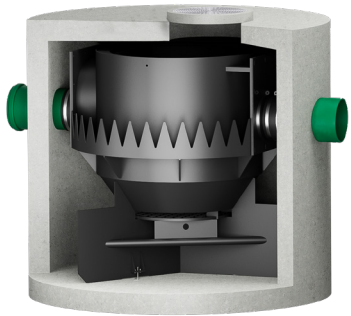


## INSIDE THE HYDROSHARK: ENGINEERED FROM THE INSIDE OUT

The Hydroshark hydrodynamic separator system is built around a distinct set of internal components—defined by smooth hydraulic contours and a signature saw-tooth weir. These engineered internals create stable vortex-induced flow patterns and hydraulically isolated storage zones to efficiently separate and retain harmful pollutants such as sediment, oils, and tire wear microplastics. Installed inside a standard manhole or custom vault, the Hydroshark system delivers proven treatment performance with flexible site integration.

## TESTED, VERIFIED AND CERTIFIED – PROVEN PERFORMANCE WHEN IT MATTERS MOST...

Hydroshark systems are NJCAT verified and NJDEP certified for TSS removal, with lab testing showing over 50% average efficiency using fine-grained sediment. Beyond TSS removal, the Hydroshark also passed scour testing at twice the treatment flow rate, qualifying it for online installation without additional bypass structures. Just as important, the system maintained minimal headloss—even under variable flow conditions— making it ideal for compact or hydraulically sensitive sites.



## ENGINEERED INTERNALS TO CATCH MORE THAN JUST SAND

Sediment collected from operating Hydroshark units shows measurable concentrations of heavy metals—evidence that the system removes more than just TSS. These real-world results highlight the importance of fine particle capture in reducing particle-bound pollutants like zinc, copper, and hydrocarbons—pollutants often missed by simpler separator designs.

## NOT ALL SEPARATORS ARE EQUAL The Value of Removing Fine TSS

Hydroshark Sediment Sump Analysis: Annual Heavy Metals Retained (lbs/100-acres)								
	<div>82 Pb 207.2 Lead</div>	<div>48 Cd 112.414 Cadmium</div>	<div>24 Cr 51.9961 Chromium</div>	<div>33 As 74.921595 Arsenic</div>	<div>29 Cu 63.546 Copper</div>	<div>28 Ni 58.6934 Nickel</div>	<div>80 Hg 200.592 Mercury</div>	<div>30 Zn 65.38 Zinc</div>
mg/kg	16	0.26	39	5	81	19	0.14	470
Retention (lbs/100-acres)	6.6	0.1	16	below LOD	33.3	7.8	0.1	193



# FLEXIBLE INSTALLATION OPTIONS

The Hydroshark’s internal components are designed for integration into a variety of structure types, including concrete and plastic manholes, vaults, and custom precast forms. Systems can be pre-installed at the manhole manufacturing facility or assembled onsite, depending on contractor preferences and site logistics. This flexibility supports both new construction and retrofit applications, minimizing installation time and simplifying coordination with structure suppliers.



# EASY MAINTENANCE

With direct surface access to the sediment and oil storage compartments, inspections and cleanouts are quick and straightforward—no confined space entry or special equipment required. The design encourages regular maintenance and simplifies long-term system upkeep.



# PROVEN IN THE FIELD. BACKED BY ENGINEERING.

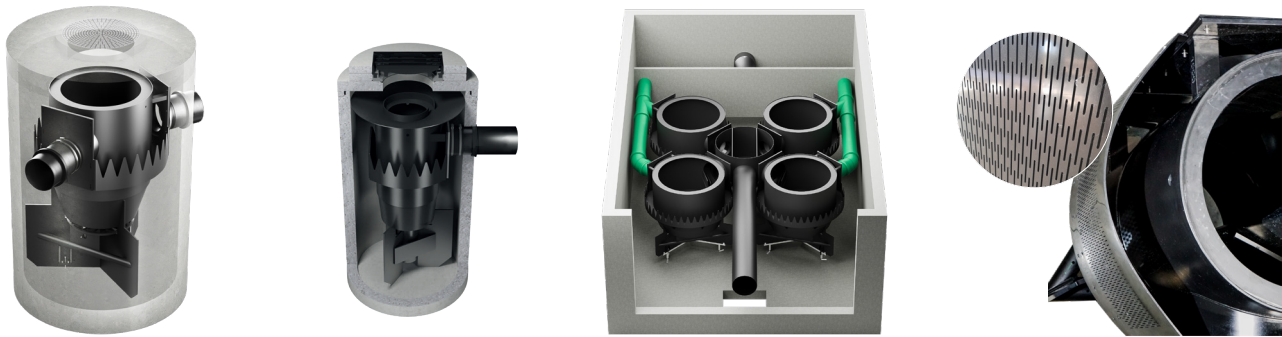
Hydroshark systems are trusted across a wide range of projects—from decentralized catch basin retrofits to large-scale treatment vaults. Each installation is supported by 3P Technik’s in-house test facility, certified performance data, and experienced engineering team. 3P engineers bring deep technical knowledge and practical design expertise, with global project experience—including complex systems like the one shown, which integrates multiple Hydrosharks within a single, purpose-built vault equipped with internal flow balancing for high flow applications.

# HYDROSHARK’S POWER COMES FROM WITHIN

Internal power, external flexibility—fit for any footprint.

- Standard sizes:** Available from 3 to 10 feet in diameter to suit a wide range of flow and footprint needs.
- Compact configurations:** Ideal for small catchment areas as a catch basin or inlet separator—perfect for decentralized treatment and retrofits.
- Scalable solutions:** Integrated into large, multi-chamber or custom vaults for high-flow applications.
- Optional screening:** Stainless steel screen insert available to meet full trash capture requirements for particles >5 mm.

HYDROSHARK → HYDROSHARK INLET → HYDROSHARK VAULT → HYDROSHARK SCREEN



HSK MODEL	MH DIAMETER		MAXIMUM PIPE DIAMETER		SUMP DEPTH		MIN. COVER		MAXIMUM FLOW (NO BYPASS)			OIL STORAGE CAPACITY		SEDIMENT STORAGE	
	ft	mm	in	DN	ft	m	ft	m	(gpm)	(cfs)	(l/s)	gal	l	yd³	m³
750	3	914	12	300	5.25	1.60	3.71	1.13	951	2.1	60.0	53	200	0.61	0.47
1200	4	1,219	18	450	4.59	1.40	4.34	1.32	1,807	4.0	114	77	290	0.80	0.61
1500	5	1,524	21	525	4.40	1.34	4.60	1.40	2,647	5.9	167	111	420	1.26	0.96
1800	6	1,829	24	600	4.14	1.26	4.76	1.45	3,313	7.4	209	114	430	1.83	1.40
2000	8	2,438	30	750	3.95	1.20	5.89	1.80	7,925	17.7	500	312	1,180	3.54	2.70
3000	10	3,048	36	900	5.65	1.72	6.40	1.95	13,869	30.9	875	510	1,930	5.11	3.90



Not all available models or pipe sizes are shown. Get in touch with our engineers [contact@3ptechnik.com](mailto:contact@3ptechnik.com)

- ✓ **Field Proven | Built to Scale**  
From single-inlet retrofits to large multi-vault systems, Hydroshark delivers consistent performance across all project sizes.
- ✓ **Certified Performance**  
NJCAT verified and NJDEP certified for TSS removal.
- ✓ **Multi-Pollutant Capture**  
Removes sediment, oil, trash, and tire wear microplastics.
- ✓ **Flexible Installation**  
Delivered preassembled or built onsite—your choice.
- ✓ **Contractor-Friendly Maintenance**  
Direct surface access, no confined space entry.
- ✓ **Optional Screen Insert**  
Screening insert for enhanced floatables control.

3P Technik Filtersysteme GmbH  
Robert-Bosch-Straße 16-18  
73337 Bad Überkingen  
Germany  
T +49 (0) 7334-92460-0

